

# Land Suitability Evaluation for Sugarcane (*Saccharum officinarum* L.)

## Cultivation in the Rejoso Watershed, Pasuruan Regency

Bambang Hermiyanto\*, Ani Acfiyatul Fardila, Cahyoadi Bowo, Basuki, Subhan Arif Budiman  
Department of Soil Science, Faculty of Agriculture, University of Jember  
Jl. Kalimantan No. 37, Jember, East Java 68121, Indonesia

\*Corresponding author: [b.hermiyanto.faperta@unej.ac.id](mailto:b.hermiyanto.faperta@unej.ac.id)

### ABSTRACT (IN ENGLISH)

Land suitability evaluation is essential for optimizing crop productivity and promoting sustainable land use. In the Rejoso Watershed, Pasuruan Regency, sugarcane production remains suboptimal due to limited integration of biophysical land characteristics into cultivation management. This study aims to assess land characteristics, classify land suitability, identify limiting factors, and provide land management recommendations for sugarcane cultivation. The analysis considered key variables including temperature, rainfall, drainage, soil texture, effective depth, cation exchange capacity (CEC), base saturation, pH (H<sub>2</sub>O), organic carbon, total nitrogen, available phosphorus (P<sub>2</sub>O<sub>5</sub>), available potassium (K<sub>2</sub>O), slope, erosion risk, and flood risk. Land suitability was evaluated using a matching approach based on the Buku Pedoman Penilaian Kesesuaian Lahan Komoditas Strategis Tahun 2016. The results showed that actual land suitability consists of class S3 (Marginally Suitable) covering 22.262 ha (64.3%) and class N (Not Suitable) covering 12.342 ha (35.7%). Potential land suitability includes class S2 (Moderately Suitable) covering 8.562 ha (24.7%), class S3 covering 13.701 ha (39.6%), and class N covering 12.342 ha (35.7%). The main limiting factors identified were temperature, drainage, soil texture, effective depth, nitrogen, phosphorus, base saturation, slope, erosion risk, and flood risk. Recommended management strategies include improving drainage using the Reynoso system, applying dolomitic lime, and SP36 fertilizer. Overall, the Rejoso Watershed demonstrates substantial potential for sugarcane development through improved land management contributing to national sugar self-sufficiency.

**Keywords:** cultivation, land suitability evaluation, matching method, Rejoso watershed, sugarcane

## ABSTRAK (IN INDONESIAN)

Evaluasi kesesuaian lahan merupakan langkah penting untuk mengoptimalkan produktivitas tanaman dan mendorong penggunaan lahan berkelanjutan. DAS Rejoso, Kabupaten Pasuruan produksi tebu masih belum optimal akibat terbatasnya integrasi karakteristik biofisik lahan dalam manajemen budidaya. Penelitian ini bertujuan untuk menilai karakteristik lahan, mengklasifikasikan kesesuaian lahan, mengidentifikasi faktor pembatas, serta memberikan rekomendasi pengelolaan lahan untuk budidaya tebu. Analisis dilakukan berdasarkan variabel utama seperti temperatur, curah hujan, drainase, tekstur tanah, kedalaman efektif, kapasitas tukar kation (KTK), kejenuhan basa, pH (H<sub>2</sub>O), karbon organik, nitrogen total, fosfor tersedia (P<sub>2</sub>O<sub>5</sub>), kalium tersedia (K<sub>2</sub>O), lereng, risiko erosi, dan risiko banjir. Evaluasi kesesuaian lahan menggunakan pendekatan *matching* berdasarkan Buku Pedoman Penilaian Kesesuaian Lahan Komoditas Strategis (2016). Hasil menunjukkan bahwa kesesuaian lahan aktual terdiri dari kelas S3 (sesuai marginal) seluas 22.262 ha (64.3%) dan kelas N (Tidak Sesuai) seluas 12.342 ha (35.7%). Kesesuaian lahan potensial terdiri atas kelas S2 (Cukup Sesuai) seluas 8.562 ha (24.7%), kelas S3 seluas 13.701 ha (39.6%), dan kelas N tetap 12.342 ha (35.7%). Faktor pembatas utama meliputi temperatur, drainase, tekstur, kedalaman efektif, nitrogen, fosfor, kejenuhan basa, kemiringan lereng, risiko erosi, dan risiko banjir. Rekomendasi pengelolaan meliputi perbaikan drainase menggunakan sistem Reynoso, aplikasi kapur dolomit, dan pemupukan SP36. Secara keseluruhan, DAS Rejoso memiliki potensi pengembangan tebu melalui pengelolaan lahan yang tepat, yang dapat berkontribusi terhadap swasembada gula nasional.

**Kata kunci:** budidaya, DAS Rejoso, evaluasi kesesuaian lahan, metode *matching*, tebu

## INTRODUCTION

Indonesia has a continuously increasing demand for sugar, but domestic production has not been able to meet national needs. Based on 2023 data, sugar consumption in Indonesia reached 6,9 million tons, while total national sugar production in the same year was recorded at 2,23 million tons (BPS, 2023a, 2023b). Therefore, the gap is filled through imports. The amount of sugar imports from

2019 to 2023 were 4 tons, 5,5 tons, 5,4 tons, 6 tons, and 5 tons. respectively (Supriyanti, 2024). As a strategic measure, the Indonesian government issued Presidential Regulation No. 40 of 2023 as an effort to accelerate national sugar self-sufficiency (Marpaung et al., 2025). Sugarcane productivity is increased through the expansion of planting areas, improved cultivation practices, and sustainable land use planning (Dumipto et al., 2019).

Pasuruan Regency has great potential for sugarcane development due to its supportive agroecological conditions and the presence of P3GI (Indonesian Sugar Plantation Research Center) and the Kedawung Sugar Factory as supporting infrastructure. However, the average sugarcane productivity in Pasuruan for the 2019–2023 period was only around 5,97 tons per hectare, 5,80 tons per hectare, 6,27 tons/ha, 5,95 tons per hectare, and 6,03 tons per hectare, respectively (BPS, 2024). This figure is much lower than the potential yield of a Good-managed sugarcane cultivation system, which is up to 90 tons/ha (Bantacut, 2013). This difference indicates inefficient land use and suggests that current cultivation practices are not fully in line with the biophysical characteristics of the land.

The Rejoso watershed is the largest river basin in Pasuruan Regency and plays an important role in supporting the livelihoods of the community. Previous studies have shown that land conversion, erosion, and flooding are recurring problems in this watershed, which can threaten agricultural productivity and environmental sustainability (Amaruzaman et al., 2018; Rahmawati Putri & Priyadarshini, 2023). Therefore, any efforts to develop sugarcane in this region must be based on land suitability assessments to prevent further degradation.

Land suitability evaluation provides an important framework for adjusting land use to the specific needs of crops. According to the FAO (1976), land evaluation is an analysis of the suitability of land resource characteristics such as climate, soil, and topography to the ecological requirements of specific crops. Evaluations can be conducted under actual or potential conditions after management improvements. This approach is widely applied in agricultural planning to optimize productivity, minimize the risk of land degradation, and ensure sustainable use of resources (Ritung et al., 2011; Wahyunto et al., 2016).

Although land suitability assessments have been widely applied in Indonesia for various commodities, comprehensive research specifically assessing the suitability of sugarcane in the Rejoso watershed is still limited. Most previous studies have focused on hydrological aspects, land use change, or conservation practices, but have not systematically assessed the capacity of this watershed to support large-scale sugarcane cultivation (Amalia et al., 2023; Firdaus et al., 2022). This information gap is problematic, given that Pasuruan Regency is a potential area for sugarcane development in East Java. Based on these issues, this study was conducted with three objectives: (i) to determine the characteristics of the land in the Rejoso watershed, (ii) to classify the actual and potential suitability of the land for sugarcane cultivation, and (iii) to identify limiting factors and provide land management recommendations.

## MATERIALS AND METHODS

### Time and Location of the Study

This research was conducted in the Rejoso watershed, Pasuruan Regency, East Java Province from January to June 2025. The Rejoso watershed covers an area of 40,141 hectares and is geographically located at  $7^{\circ}37'19''$ – $7^{\circ}55'11''$  south latitude and  $112^{\circ}51'45''$ – $113^{\circ}03'25''$  east longitude. The altitude of the Rejoso watershed ranges from 0 to 2.763 meters above sea level. The research location is shown in Figure 1.

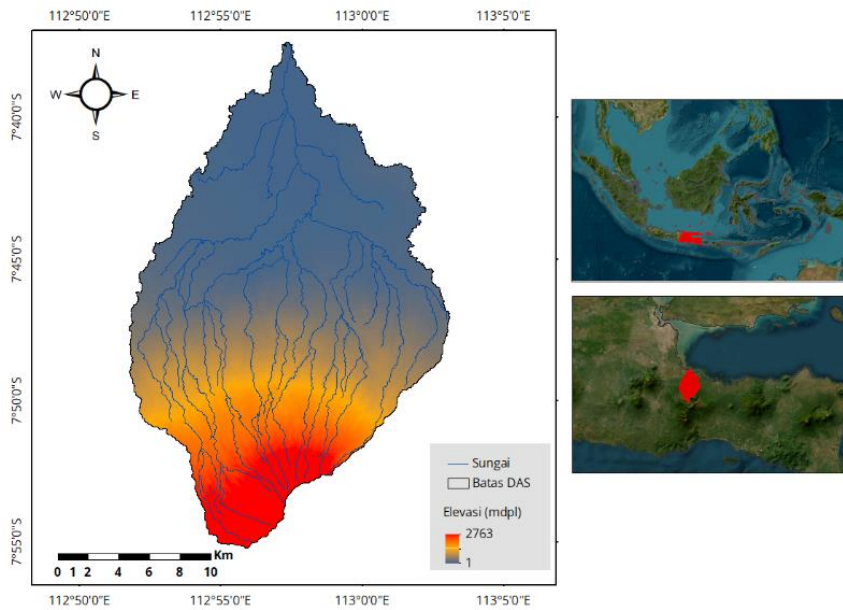


Figure 1. Map of the study area

## Research Method

This study used an exploratory descriptive method. Field surveys and soil sampling were conducted on 22 Land Map Units (LMU) in the Rejoso watershed (Table 1). Disturbed soil samples were taken at a depth of 0-20 cm using the purposive random sampling method. Soil samples were analyzed at the Soil Fertility and Soil Health Laboratory and the Pedoclimatology and Land Resources Laboratory, Department of Soil Science, Faculty of Agriculture, University of Jember. The parameters and analysis methods are presented in Table 2.

Table 1. Characteristics of land map units (LMU) in the Rejoso watershed

SPL	Soil Type	Slope (%)	Land Use	Area		Sampling Coordinates	
				(ha)	(%)	X	Y
1	Vertisol	0-3	Upland	1.144	3,20	112° 58' 2" E	7° 44' 40" LS
2	Vertisol	0-3	Mixed Gardens	858	2,40	112° 58' 6" E	7° 43' 45" S
3	Inceptisol	3-8	Upland	5.504	15,38	112° 54' 20" E	7° 46' 43" S
4	Inceptisol	8-15	Upland	1.641	4,59	113° 0' 38" E	7° 49' 42" LS
5	Inceptisol	15-25	Upland	348	0,97	113° 0' 49" E	7° 49' 29" S
6	Andisol	8-15	Bushes	310	0,87	113° 0' 38" E	7° 49' 42" LS
7	Andisol	15-25	Bushes	1.249	3,49	112° 58' 17" E	7° 46' 8" S
8	Andisol	25-45	Bushes	1.976	5,52	112° 55' 20" E	7° 42' 29" S
9	Inceptisol	3-8	Plantation	1.307	3,65	112° 55' 12" E	7° 46' 38" LS
10	Inceptisol	8-15	Plantation	983	2,75	112° 56' 26" E	7° 49' 1" LS
11	Inceptisol	15-25	Plantation	214	0,60	112° 55' 18" E	7° 54' 18" S
12	Inceptisol	3-8	Bushes	604	1,69	112° 55' 28" E	7° 54' 31" LS
13	Inceptisol	8-15	Bushes	219	0,61	112° 52' 54" E	7° 49' 43" S
14	Vertisol	0-3	Rice Fields	7.418	20,73	113° 2' 18" E	7° 47' 26" S
15	Inceptisol	0-3	Rice Fields	1.287	3,60	113° 2' 19" E	7° 47' 20" LS
16	Andisol	8-15	Upland	3.201	8,95	113° 2' 29" E	7° 47' 11" S

17	Andisol	25-45	Upland	1.596	4,46	112° 58' 54" E	7° 46' 57" S
18	Andisol	15-25	Upland	1.992	5,57	112° 58' 5" E	7° 48' 4" S
19	Andisol	3-8	Mixed Gardens	191	0,53	112° 58' 18" E	7° 46' 8" S
20	Andisol	15-25	Mixed Gardens	779	2,18	112° 59' 56" E	7° 51' 11" LS
21	Andisol	8-15	Mixed Gardens	956	2,67	112° 59' 44" E	7° 51' 19" S
22	Vertisol	0-3	Plantation	672	1,88	112° 59' 6" E	7° 51' 45" S
Total Area				34.604	100		

Table 2. The parameters and analysis methods

Land Characteristics	Method	Reference
Soil Texture Class	Hydrometer	(Bouyoucos, 1927)
Soil pH	Measurement using pH meter 1:5	(Eviati & Sulaiman, 2009)
N-Total	Kjeldahl	(Kjeldahl, 1883)
Available P	Olsen	(Olsen et al., 1954)
Available K	NH <sub>4</sub> OAc Extract 1M pH 7	(Chapman, 1965)
Cation Exchange Capacity (CEC)	NH <sub>4</sub> OAc Extract 1M pH 7	(Chapman, 1965)
Ca, Na, Mg	NH <sub>4</sub> OAc Extract 1M pH 7	(Chapman, 1965)
C-Organic	Walkley & Black	(Walkley & Black, 1934)
Salinitas (DHL)	Measurement using EC Meter	(Eviati & Sulaiman, 2009)
Temperature (°C)	Citra Satelit (MODIS)	<a href="https://lpdaac.usgs.gov/products/mod11a2v061/">https://lpdaac.usgs.gov/products/mod11a2v061/</a>
Rainfall (2014-2023) (mm/tahun)	Satellite Imagery (CHIRPS)	<a href="https://www.chc.ucsb.edu/data/chirps">https://www.chc.ucsb.edu/data/chirps</a>
Slope (%)	Spatial Analysis	(Moore et al., 1991)
Erosion Hazard (ton/ha/year)	RUSLE	(Renard et al., 1997)
Soil Depth (cm)	Field Observation	(Sukarman et al., 2017)
Drainage	Field Observation	(Sukarman et al., 2017)
Flood Hazard	Interview	(Sukarman et al., 2017)

Land suitability assessment is carried out by matching land characteristics with land use requirements or crop growth, management, and conservation requirements (Ritung et al., 2011). The determination of sugarcane land suitability refers to the book “Petunjuk teknis pedoman penilaian kesesuaian lahan untuk komoditas pertanian strategis tingkat semi detail skala 1:50.000 oleh Balai Besar Sumberdaya Lahan Pertanian Tahun 2016”. All spatial data was processed using ArcGIS 10.8 software for spatial analysis and map creation. The land characteristics of each LMU are matched with the growth requirements of sugarcane (*Saccharum officinarum* L.) presented in Table 3. The matching results yield actual and potential land suitability classes. The suitability classes consist of: highly suitable (S1), moderately suitable (S2), marginally suitable (S3), and unsuitable (N).

Table 3. Criteria for land suitability classes of sugarcane

Terms of Use/ Land Characteristics	Land Suitability Class			
	S1	S2	S3	N
<b>Temperature (tc)</b>				
Temperature (°C)	24 - 28	>28 – 31 22 -< 24	>31–33 21 -< 22	>33 <21
<b>Water availability (wa)</b>				
Annual rainfall (mm/year)	1.500-2.500	1.300-<1.500	1.000-<1.300 >2.500-3.000	<1.000 >3.000
<b>Oxygen availability (oa)</b>				
Drainage	well, quite good	A bit hampered	Stuck, a bit fast	Highly inhibited, fast
<b>Rooting media (rc)</b>				
Soil texture	rather medium	fine, Smooth	A bit rough	Rough
Soil depth (cm)	> 100	75-100	50 - 75	<50
<b>Retention of sins (nr)</b>				
Soil CEC (cmol)	>16	5-16	<5	
Base saturation (%)	>50	35-50	<35	
pH H <sub>2</sub> O	5,5 – 7,5	5,0 – 5,5 7,5 - 8,0	<5,0 >8,0	
C-organik (%)	>1,2	<0,8-1,2	<0,8	
<b>Nutrient availability (na)</b>				
N-total (%)	Medium	Low	Very low	
P <sub>2</sub> O <sub>5</sub> (ppm)	>75	25-75	<25	
K <sub>2</sub> O (ppm)	>150	75-150	<75	
<b>Toxicity (xc)</b>				
Salinity (dS/m)	< 5	5-8	8-10	>10
<b>Erosion hazards (eh)</b>				
Slope (%)	<3	3-8	8-15	>15
Erosion hazards		Very light	mild- medium	Heavy-very heavy
<b>Flood hazards (fh)</b>				
-Height (cm)	-	-	25	>25
-Duration (hari)	-	-	<7	>7

Sumber: (Djaja et al.. 2024; Kementerian Pertanian. 2015; Wahyunto et al.. 2016)

## RESULTS AND DISCUSSION

### Land characteristics

Land characteristics were assessed based on actual conditions and used as the basis for analyzing the suitability of land for sugarcane cultivation in the Rejoso watershed. Land

characteristics were obtained from field observations, laboratory analysis, and secondary data processing. The characteristics land of the Rejoso watershed are presented in Table 4.

Accepted Manuscript JTS (May 2026)

Table 4. Characteristics land of the Rejoso watershed

LMU	Soil Texture Class	pH H <sub>2</sub> O	N-Total (%)	Available -P (ppm)	Available -K (ppm)	CEC (cmol/kg)	BS (%)	C-Organic (%)	EC	Temp.	Rainfall (mm/year)	Slope (%)	Erosion hazard	Effective Soil depth (cm)	Drainage	Flood hazard
1	Medium	7.34	0.17	8.1	235	28.64	30.63	1.86	0.149	26	1838	0-3	Very Low	Deep	Good	-
2	Medium	7.06	0.2	6	685	37.07	24.49	3.3	0.093	26	1819	0-3	Very Low	Moderate	Poor	Duration <7 day
3	Smooth	6.84	0.16	4.2	166	29.18	23.77	1.25	0.087	26	1974	3-8	Low	Moderate	Good	Height>25cm
4	Moderately Coarse	6.44	0.24	5.3	232	26.45	29.22	2.19	0.131	25	2081	3-8	Low	Deep	Good	-
5	Moderately Smooth	6.46	0.11	5.2	286	29.23	25.78	1.61	0.091	25	2095	15-25	Low	Moderate	Moderate	-
6	Moderately Coarse	6.38	0.2	3.2	129	24.57	25.44	1.98	0.11	22	2281	8-15	Very Low	Deep	Good	-
7	Moderately Coarse	6.33	0.24	3.8	163	31.97	22.83	1.39	0.095	21	2401	15-25	Low	Deep	Moderate	-
8	Moderately Coarse	6.3	0.17	1.5	117	22.05	29.55	1.6	0.088	20	2418	15-25	Low	Deep	Moderate	-
9	Moderately Coarse	6.16	0.13	25.6	333	30.6	27.12	1.43	0.172	26	1995	3-8	Very Low	Shallow	Good	-
10	Moderately Coarse	6.24	0.06	5.8	381	32.26	25.53	1.71	0.129	25	2065	8-15	Heavy	Shallow	Good	-
11	Moderately Smooth	6.14	0.11	12.8	184	38.41	19.52	1.59	0.189	25	2067	15-25	Heavy	Shallow	Moderate	-
12	Smooth	6.1	0.24	2.5	243	30.55	25.69	1.14	0.184	27	1988	3-8	Low	Deep	Good	-
13	Medium	6.5	0.08	4	229	33.6	24.45	1.06	0.266	26	2053	8-15	Heavy	Shallow	Good	-
14	Moderately Smooth	7.44	0.29	19.3	216	40.98	35.13	1.43	0.127	26	1808	0-3	Very Low	Moderate	Poor	-
15	Moderately Smooth	7.69	0.21	8.6	140	32.96	22.02	2.22	0.074	26	1924	0-3	Very Low	Shallow	Poor	-
16	Moderately Smooth	6.15	0.26	6.4	54	21.63	18.84	1.06	0.102	23	2258	8-15	Low	Moderate	Good	-
17	Moderately Smooth	6.16	0.36	10.8	118	21.84	19.59	1.08	0.175	19	2497	25-45	Very Heavy	Moderate	Moderate	-

18	Moderately Coarse	6.15	0.28	10.5	628	23.1	33.17	0.89	0.208	21	2385	15-25	Very Heavy	Deep	Moderate	-
19	Moderately Coarse	6.25	0.17	18.9	90	31.15	18.26	1.94	0.125	23	2197	3-8	Very Low	Deep	Good	-
20	Smooth	6.16	0.22	4.4	55	17.5	33.19	0.81	0.152	21	2344	15-25	Low	Moderate	Good	-
21	Moderately Coarse	6.15	0.3	10.6	119	18.87	32.25	1.19	0.185	22	2261	8-15	Very Low	Deep	Moderate	-
22	Moderately Coarse	6.9	0.13	12.1	69	31.81	28.62	1.24	0.066	26	1825	0-3	Very Low	Moderate	Good	-

Accepted Manuscript JTS (May 2020)

The temperature in the Rejoso watershed ranges from 19°C to 27°C. The minimum temperature required to support water and nutrient absorption ranges from 19°C to 20°C, while the maximum temperature ranges from 28°C to 30°C (Pramuhadi, 2010). The average annual rainfall in the Rejoso River Basin is recorded at 2.117 mm/year. This value is generally close to the optimal requirements for sugarcane, which requires rainfall of around 200 mm/month during the 5–6 month growth phase, 125 mm/month during the 2 month transition period, and less than 75 mm/month during the 4–5 month ripening phase (Hartatie et al., 2021).

The effective soil depth in several LMUs is 25–50 cm with an area of 4.011 ha, a depth of >50–<100 cm with an area of 20.992 ha, and a depth of 100–<150 cm with an area of 9.601 ha. Soil depth can be a limiting factor for root media, as sugarcane plants require sufficient root space to support stem growth that can reach heights of up to 4 meters (Basuki et al., 2022). Drainage conditions in the Rejoso watershed are generally good, covering an area of 16.066 ha. A comparison of good and poor drainage conditions in the Rejoso watershed is shown in Figure 2. Sugarcane requires 10% aeration for root respiration and cannot tolerate prolonged flooding (Hunsigi, 2001). Impaired drainage can reduce the number of sugarcane tillers, reduce the number of green leaves, stem nodes, stem diameter, and stem height, which in turn reduces plant weight and increases the number of adventitious roots (Permana et al., 2018). Adventitious roots reduce stem sucrose because they are used to adapt to soil oxygen deficiency (Basuki et al., 2022).

The slope gradient in the Rejoso watershed ranges from 0% to 45%. Land with a slope gradient of >20% can still be used for sugarcane cultivation, but requires intensive soil conservation measures (Mulyono, 2011). The risk of erosion ranges from very low to very high, with surface soil loss reaching 12,51 cm/year. Based on the Erosion Hazard Level (EHL) classification, the EHL of the Rejoso watershed has four criteria, namely very light covering an area of 92,66 km<sup>2</sup>, light covering an area of 58,06 km<sup>2</sup>, moderate covering 179,17 km<sup>2</sup>, and heavy covering 30,41 km<sup>2</sup> (Amalia et al., 2023). Flooding is one of the obstacles in sugarcane cultivation in the Rejoso watershed, especially in LMU 2 and 22, which have recorded waterlogging with an average depth of >25 cm.

Sugarcane plants can still survive in flooded conditions for a short time, but this can increase the risk of disease caused by fungi, viruses, and bacteria (Sys et al., 1993). Based on the level of flood vulnerability, the Rejoso watershed and surrounding areas are classified into four classes, namely highly vulnerable (7.172 ha), vulnerable (2.071 ha), moderately vulnerable (860 ha), and not prone (30 ha), spread across the subdistricts of Lekok, Nguling, Grati, Rejoso, Bugul Kidul, Gondang Wetan, and Winongan (Jusfarida & Syafirina, 2021). Therefore, areas with a high risk of flooding are not suitable for sugarcane cultivation without drainage improvements or other management measures.



Figure 1. Soil drainage conditions in the study area: (a) Good-drained at LMU 1 and (b) poor drained at LMU 22.

The Rejoso watershed has soil textures ranging from slightly coarse to medium, slightly Smooth, and Smooth. Sugarcane plants grow optimally in soils with a slightly Smooth to medium texture (Wahyunto et al., 2016). Clay soils are considered more ideal for agriculture because they have the ability to retain moisture and water availability for plants (Widjajanto et al., 2024). Base saturation (BS) in the Rejoso watershed is classified as low to very low. Low BS reflects the dominance of acid cations such as  $H^+$  and  $Al^{3+}$ , which contribute to soil acidity and reduce nutrient availability. This condition is generally correlated with low soil pH. Sugarcane plants can grow at a pH of 4,5–8,5, but optimal growth occurs at a pH of 5,5–7,5 (Hunsigi, 2001).

The cation exchange capacity (CEC) of soil in the Rejoso watershed is classified as moderate to very high. The highest value was recorded in LMU 14 (40,98 cmol/kg) with vertisol soil type. Vertisol soil has a 2:1 clay mineral that is capable of absorbing and retaining large amounts of cations (Kadarwati, 2016). The organic C content at LMU 2, 4, and 15 is >2%, reflecting a high level of organic matter. Land use in these LMUs includes mixed gardens, dry fields, and rice fields. According to Bakri et al, (2016). the highest organic C value was found in forest land (3,07%), followed by mixed gardens (2,57%), shrubs (2,01%), and dry fields (1,03%).

Macro nutrients such as nitrogen (N), phosphorus (P), and potassium (K) are important components in supporting sugarcane growth. Nitrogen content in the Rejoso watershed is classified as low to moderate. Nitrogen requirements for sugarcane reach around 160 kg/ha (Basuki et al., 2022). In the Rejoso watershed, the lowest phosphorus content was recorded at 1,5 ppm in LMU 8 with andisol soil type. Andisol soil has high phosphate retention (>85%) (Fiantis, 2016). The exchangeable K content in the Rejoso watershed ranges from 54 ppm to 685 ppm. Potassium availability is influenced by soil parent material and acidity (pH) (Winazira & Sufardi, 2021).

The soil salinity level in the Rejoso watershed is classified as low to moderate. The salinity tolerance threshold for sugarcane is 1,7 dS/m (Morais et al., 2022). Sugarcane plants are more sensitive to salinity stress in the seedling phase. The photosynthesis process will be inhibited due to salt accumulation in the mesophyll tissue, which causes an increase in CO<sub>2</sub> concentration in the intercellular space, thereby reducing stomatal opening (da Silva et al., 2008). Clones that are resistant to salinity stress are PS-864, PS-862, Bululawang, VMC, and HWY Merah (Sari et al., 2019).

### **Actual Land Suitability**

Actual suitability is obtained based on current natural conditions without making any improvements. Land suitability assessment is based on the prerequisites for sugarcane cultivation according to the 2016 Strategic Commodity Land Suitability Assessment Guidelines. The actual land

suitability class and limiting factors for sugarcane cultivation in the Rejoso watershed are presented in Table 5.

Table 5. Actual land suitability classes and limiting factors for sugarcane

LMU	Actual Land Suitability	Area	
		Ha	%
1	S3 (nr2, na2)	1.144	3,3
2	N (fh1)	858	2,5
3	S3 (oa1, rc2, nr2, na2, eh2)	5.504	15,9
4	S3 (rc1, nr2, eh2, na2)	1.641	4,7
5	N (eh1,eh2)	348	1,0
6	S3 (rc1, nr2, na2, eh1)	310	0,9
7	N (eh1)	1.304	3,8
8	N (tc1, eh1)	2.028	5,9
9	N (rc2)	1.307	3,8
10	N (rc2)	983	2,8
11	N (rc2, eh1, eh2)	214	0,6
12	S3 (nr2, na2, lp1)	604	1,7
13	N (rc2)	218	0,6
14	S3 (oa1, na2)	7.417	21,4
15	S3 (oa1, rc2, nr2, na2)	1.287	3,7
16	S3 (rc2, nr2, na2, na3, eh1, eh2)	3.207	9,3
17	N (tc1, eh1, eh2)	1.605	4,6
18	N (eh2)	2.027	5,9
19	S3 (rc1, nr2, na2)	191	0,6
20	N (eh1)	784	2,3
21	S3 (rc1, nr2, na2, na3, eh1, eh2)	956	2,8
22	N (fh1)	666	1,9
<b>Total</b>		<b>34.604</b>	<b>100</b>

Note: temperature (tc); drainage (oa); soil texture (rc1); effective depth (rc2); base saturation (nr2); available phosphorus (na2); potassium (na3); flood hazard (fh); slope (eh1); and Erosion Hazard Level (eh2)

Based on the results of the actual land suitability evaluation, the Rejoso watershed has two suitability classes, namely S3 (Marginal Suitability) and N (Not suitable). The S3 class includes LMU 1, 3, 4, 6, 12, 14, 15, 16, 19, and 21 with an area of 22.262 ha (64,3%). The N (Not suitable) class includes LMU 2, 5, 7, 8, 9, 10, 11, 13, 17, 18, 20, and 22 with an area of 12.342 ha (35,7%). The distribution of actual land suitability for sugarcane cultivation in the Rejoso watershed is shown in Figure 3. Based on Figure 3, class S3 dominates the central and downstream areas of the Rejoso watershed. The downstream area of the Rejoso watershed is dominated by rice fields and sugarcane plantations (Amaruzaman et al., 2018). Meanwhile, the N land suitability class dominates the upstream area of the Rejoso watershed. The factors limiting suitability in the upstream area are slope gradient and erosion hazards. This is because sugarcane has a fibrous root system, which is less

effective in retaining soil particles from erosion. The displacement of topsoil due to erosion causes a decline in soil fertility (Romadhon & Hermiyanto, 2021). Lukito (2019) research shows that the subdistricts with dominant sugarcane areas are Grati (27,29%), Nguling (15,89%), Winongan (15,41%), and Gondang Wetan (7,12%).

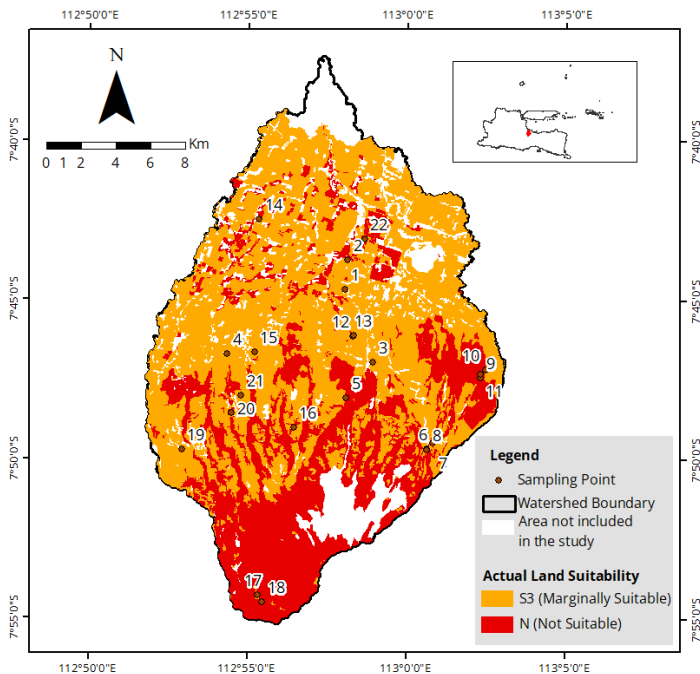


Figure 2. Actual land suitability map for sugarcane in the Rejoso Watershed

The actual land suitability rating of class S3 can be raised to class S2 by considering the limiting factors that can be improved. Limiting factors in actual land suitability include temperature (tc), drainage (oa), soil texture (rc1), effective depth (rc2), base saturation (nr2), available phosphorus (na2), potassium (na3), flood hazard (fh), slope (eh1), and Erosion Hazard Level (eh2). Temperature, soil texture, and effective depth are permanent limiting factors and therefore cannot be improved. The coarser the soil texture, the less water it can provide for plants (Cahyono et al., 2019). Meanwhile, nutrients in soil fertility can be improved because they are not permanent limiting factors. Nutrient availability is not a major limiting factor in assessing land suitability, as it can still be overcome through land management such as adding nutrients to the soil (Harahap et al., 2020). Nutrient retention is an indicator of soil quality that acts as a limiting factor at the conditional suitability (CS)

level for sugarcane crops (Mulyono, 2009). According to the FAO (1976), unsuitable land has limiting factors that can be overcome, but requires an investment that is not proportional to the returns.

### Potential Land Suitability

Potential land suitability is the level of land suitability obtained after considering specific inputs and management actions on each land unit (Hartati et al., 2018). The potential land suitability class for sugarcane cultivation in the Rejoso watershed is presented in Table 6.

Table 6. Potential land suitability classes and limiting factors for sugarcane

LMU	Potential Land Suitability	Area	
		Ha	%
1	S2 (nr2, na2)	1.144	3,3
2	N (fh1)	858	2,5
3	S3 (rc2)	5.504	15,9
4	S3 (rc1)	1.641	4,7
5	N (eh1, eh2)	348	1,0
6	S3 (rc1,eh1)	310	0,9
7	N (eh1)	1.304	3,8
8	N (tc1, eh1)	2.028	5,9
9	N (rc2)	1.307	3,8
10	N (rc2)	983	2,8
11	N (rc2, eh1, eh2)	214	0,6
12	S3 (lp1)	604	1,7
13	N (rc2)	218	0,6
14	S2 (oa1, na2)	7.417	21,4
15	S3 (rc2)	1.287	3,7
16	S3 (rc2, nr2, eh1, eh2)	3.207	9,3
17	N (tc1, eh1, eh2)	1.605	4,6
18	N (eh2)	2.027	5,9
19	S3 (rc1)	191	0,6
20	N (eh1)	784	2,3
21	S3 (rc1, eh1, eh2)	956	2,8
22	N (fh1)	6.666	1,9
<b>Total</b>		<b>34.604</b>	<b>100</b>

Note: temperature (tc); drainage (oa); soil texture (rc1); effective depth (rc2); base saturation (nr2); available phosphorus (na2); potassium (na3); flood hazard (fh); slope (eh1); and Erosion Hazard Level (eh2)

Based on Table 6, there are three classes of potential land suitability, namely S2, S3, and N. Class S2 includes LMU 1 and 14 with an area of 8.562 ha (24,7%). Class S3 includes LMU 3, 4, 6, 12, 15, 16, 19, and 21 with an area of 13.700 ha (39,6%). Class N includes LMU 2, 5, 7, 8, 9, 10, 11, 13, 17, 18, 20, and 22 with an area of 12.342 ha (35,7%). This assessment is based on the possibility of improving the limiting factors found in the actual conditions. However, not all limiting factors can be improved technically or economically. Therefore, any management intervention aimed at

improving land quality from actual to potential conditions must consider environmental sustainability and feasibility through cost-benefit analysis (Basuki et al., 2022). The distribution of potential land suitability is shown in Figure 4. Based on the distribution of potential land suitability, class S2 dominates the downstream area of the Rejoso watershed, class S3 dominates the central area, and class N continues to dominate the upstream area because it has limiting factors that are difficult to improve. The erosion rate as a limiting factor occurs due to long-term monoculture cultivation practices without considering soil quality, thus forming the basis for the proposed integrated management model throughout the Arjasa sub-watershed area (Hermiyanto et al., 2025). Erosion rates can be reduced by constructing terraces, contour planting, or planting ground cover, but on slopes steeper than 30%, management requires high costs (Hartati et al., 2018).

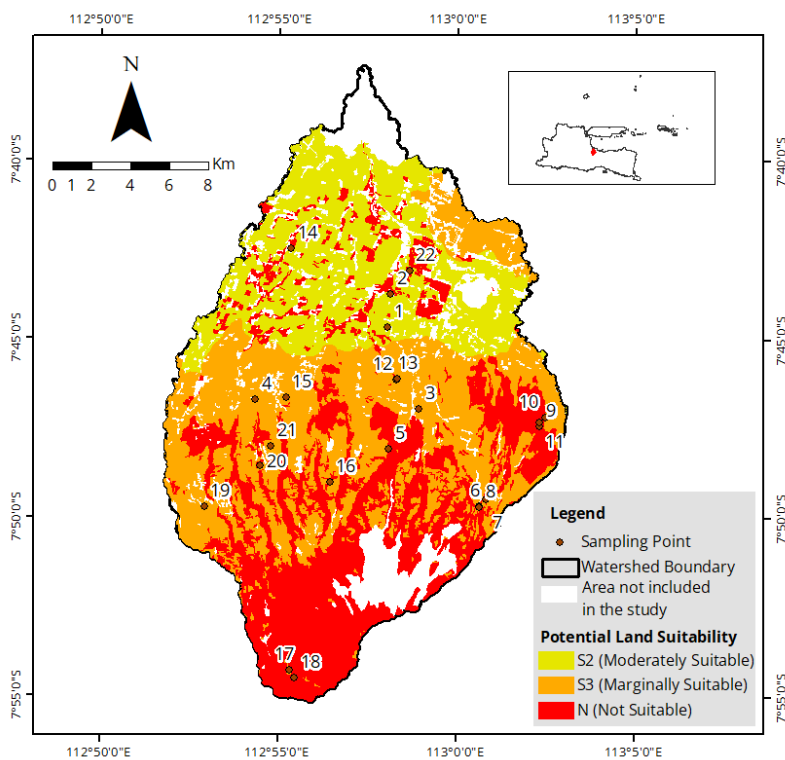


Figure 3. Potential land suitability map for sugarcane in the Rejoso Watershed

Efforts to improve the suitability of actual land to become potential land involve several limiting factors, namely drainage (oa), base saturation (nr2), and available phosphorus (na2). Land management in the Rejoso watershed requires a strategy based on specific interventions, including drainage improvement using the Reynoso method. The Reynoso system is a manual soil cultivation system for rice fields that involves the creation of water channels that function as water inlets and

outlets (Kementerian Pertanian, 2015). The perimeter ditch has a width of 70 cm at the top, 50 cm at the bottom, and a depth of 100 cm. The mujur ditch has a width of 60 cm at the top, 40 cm at the bottom, and a depth of 80 cm. The malang ditch has the same dimensions with a width of 50 cm at the top, 30 cm at the bottom, and a depth of 70 cm (Kementerian Pertanian, 2015). Improvement of base saturation with dolomite lime application. An increase in pH has an impact on increasing base saturation, because  $\text{Ca}^{2+}$  and  $\text{Mg}^{2+}$  ions will replace  $\text{H}^+$  and  $\text{Al}^{3+}$  ions in the soil cation exchange complex. Dolomite ( $\text{CaMg}(\text{CO}_3)_2$ ) increases base saturation, soil pH, and the availability of Ca and Mg for plant growth (Sihombing et al., 2019). Dolomite contains calcium (Ca) and magnesium (Mg) (Basuki & Sari, 2019). The availability of phosphorus is improved by applying SP36 fertilizer. Mulyono's (2009) research shows that soil with very low phosphorus content requires 215 kg/ha of SP-36 fertilizer, applied once during soil cultivation. Fertilization of sugarcane plants is carried out in two stages, namely two weeks after planting with the application of 1/3 of the urea dose, the entire SP-36 dose, and 1/3 of the KCl dose, followed by six weeks after planting with the remaining urea and KCl doses (Kiswanto & Wijayanto, 2014). Organic matter increases soil phosphorus availability through mineralization, which releases phosphate ions ( $\text{PO}_4^{3-}$ ) (Syahidah & Hermiyanto, 2019). Phosphorus application has a positive effect on sugarcane stalk growth (El-Tilib et al, 2004).

## CONCLUSIONS

The evaluation results show that most of the Rejoso watershed area has the potential to support sugarcane cultivation, especially after interventions to manage limiting factors. The results showed that actual land suitability consists of class S3 (Marginally Suitable) covering 22,262 ha (64,3%) and class N (Not Suitable) covering 12,342 ha (35,7%). Potential land suitability includes class S2 (Moderately Suitable) covering 8,562 ha (24,7%), class S3 covering 13,701 ha (39,6%), and class N covering 12,342 ha (35,7%). The increase in suitability class from S3 to S2 on some of the land shows that technical improvements such as liming, drainage improvements, and phosphorus fertilization can significantly increase land carrying capacity. However, land with an N (Not suitable) class that has not undergone any changes indicates permanent limitations and requires an assessment of alternative

land uses. The strategic recommendation is to implement integrated land management that considers technical, economic, and ecological aspects to support sustainable sugarcane productivity in the Rejoso watershed.

### ACKNOWLEDGEMENTS

The authors thank the research funding support from Institute for Research and Community Service (LPPM), University of Jember, which has provided funding assistance. The authors also thank the entire research team and all those involved in this research.

### REFERENCES

- Amalia. N., Ery Suhartanto. & Linda Prasetyorini. (2023). Usaha Konservasi Terhadap Erosi Berbasis Sistem Informasi Geografis Pada Daerah Aliran Sungai Rejoso Kabupaten Pasuruan. *Jurnal Teknologi Dan Rekayasa Sumber Daya Air*. 3(2). 757–766.  
<https://doi.org/10.21776/ub.jtresda.2023.003.02.064>
- Amaruzaman. S., Khasanah. N., Tanika. L., Dwiyantri. E., Lusiana. B., Leimona. B., & Janudianto. (2018). *Landscape characteristics of Rejoso Watershed: land cover dynamics, farming systems and community strategies*. World Agroforestry Centre (ICRAF) Southeast Asia Regional Program.
- Bakri. I., Thaha. R. A., & Isrun. (2016). Status Beberapa Sifat Kimia Tanah Pada Berbagai Penggunaan Lahan di DAS Poboya Kecamatan Palu Selatan. *J. Agrotekbis*. 4(5). 512–520.  
<http://jurnal.faperta.untad.ac.id/index.php/agrotekbis/article/view/53>.
- Bantacut. T. (2013). Pengembangan Pabrik Gula Mini untuk Mencapai Swasembada Gula. *Jurnal Pangan*. 22(4). <https://doi.org/10.33964/jp.v22i4.126>
- Basuki. B., Mandala. M., Bowo. C., & Fitriani. V. (2022). Evaluation of the suitability of a sugarcane plant in mount argopura's volcanic land using a geographic information system. *Jurnal Ilmiah Rekayasa Pertanian Dan Biosistem*. 10(1). 145–160. <https://doi.org/10.29303/jrpb.v10i1.315>

- Basuki. & Sari. V. K. (2019). Efektifitas Dolomit Dalam Mempertahankan pH Tanah Inceptisol Perkebunan Tebu Blimbing Djatiroto. *Buletin Tanaman Tembakau. Serat & Minyak Industri*. 11(2). 58–64. <https://doi.org/10.21082/btism.v11n2.2019.58-64>
- Bouyoucos. G. J. (1927). The Hydrometer as a New Method for the Mechanical Analysis of Soils. *Soil Science*. 23. 343–353. <https://doi.org/10.1097/00010694-192705000-00002>.
- BPS. (2023a). *Pengeluaran untuk Konsumsi Penduduk Indonesia*. Badan Pusat Statistik.
- BPS. (2023b). *Statistik Tebu Indonesia*. Badan Pusat Statistik.
- BPS. (2024). *Kabupaten Pasuruan Dalam Angka*.
- Cahyono. Y.. Wijayanto. Y.. & Hermiyanto. B. (2019). Predikis Hasil Tanaman Padi berdasarkan Input Nitrogen dengan Simulasi Model Cropsyst di Kecamatan Mayang. *Jurnal Ilmu Tanah Dan Lingkungan*. 21(2). 58–65. <https://doi.org/10.29244/jitl.21.2.58-65>
- Chapman. H. (1965). *Methods of soil analysis: Part 2 Chemical and microbiological properties*. American Society of Agronomy. Soil Science Society of America.  
<https://doi.org/10.2134/agronmonogr9.2.2ed>
- da Silva. E. C.. Nogueira. R. J. M. C.. de Araújo. F. P.. de Melo. N. F.. & de Azevedo Neto. A. D. (2008). Physiological responses to salt stress in young umbu plants. *Environmental and Experimental Botany*. 63(1–3). 147–157. <https://doi.org/10.1016/j.envexpbot.2007.11.010>.
- Djaja, I., Yusuf, M. A., & Ranga. (2024). Evaluation of Land suitability for sugarcane (*Saccharum officinarum* L.) for sustainable land use district Jagebob Merauke Regency. *IOP Conference Series: Earth and Environmental Science*, 1471(1). <https://doi.org/10.1088/1755-1315/1471/1/012018>.

- Dumipto. P. K., Rayes. M. L., & Agustina. C. (2019). Evaluasi Kesesuaian Lahan untuk Tanaman Tebu Pada Lahan Karst Formasi Wonosari (Tmwl) Kecamatan Gedangan Kabupaten Malang. *Jurnal Tanah Dan Sumberdaya Lahan*. 6(2). 1361–1374.  
<https://doi.org/10.21776/ub.jtsl.2019.006.2.17>
- El-Tilib. M. A., Elnasikh. M. H., & Elamin. E. A. (2004). Phosphorus and potassium fertilization effects on growth attributes and yield of two sugarcane varieties grown on three soil series. *Journal of Plant Nutrition*. 27(4). 663–699. <https://doi.org/10.1081/PLN-120030375>
- Eviati. & Sulaiman. (2009). Analisis Kimia Tanah, Tanaman, Air, dan Pupuk (Edisi 2). Bogor: Balai Penelitian Tanah.
- FAO. (1976). *A framework for land evaluation*. Food and Agriculture Organization of the United Nations.
- Fiantis. D. (2016). Morfologi dan Klasifikasi Tanah. Lembaga Pengembangan Teknologi Informasi dan Komunikasi (LPTIK).
- Firdaus. Hendri. J., & Saidi. B. B. (2022). Evaluasi Kesesuaian Lahan Untuk Pengembangan Komoditas Lada di Kabupaten Tanjung Jabung Timur. *Jurnal Ilmiah Ilmu Terapan Universitas Jambi*. 6(2). 181–191. <https://doi.org/10.22437/jiituj.v6i2.22955>
- Harahap. F. S., Rahmaniah. R., Sidabuke. S. H., & Zuhirsyan. M. (2020). Evaluasi Kesesuaian Lahan Tanaman Sorgum (*Shorgum bicolor*) di Kecamatan Bilah Barat. Kabupaten Labuhanbatu. *Jurnal Tanah Dan Sumberdaya Lahan*. 8(1). 231–238.  
<https://doi.org/10.21776/ub.jtsl.2021.008.1.26>
- Hartati. T. M., Sunarminto. B. H., & Nurudin. M. (2018). Evaluasi Kesesuaian Lahan untuk Tanaman Perkebunan di Wilayah Galela. Kabupaten Halmahera Utara. Propinsi Maluku Utara. *Caraka Tani: Journal of Sustainable Agriculture*. 33(1). 68–77.  
<https://doi.org/10.20961/carakatani.v33i1.19298>

- Hartatie. D., Taufika. R., & Achmad. P. B. (2021). Pengaruh Curah Hujan dan Pemupukan terhadap Produksi Tebu (*Saccharum officinarum* L.) di Pabrik Gula Asembagus Kabupaten Situbondo. *Jurnal Ilmiah Inovasi*. 21(2). 66–72. <https://doi.org/10.25047/jii.v21i2.2592>
- Hermiyanto. B., Mawarni. C., Winarso. S., & Budiman. S. A. (2025). Soil quality assessment and land capability evaluation for determining integrated watershed management model through SWOT analysis and AHP method in Arjasa Sub-watershed. Indonesia. *Watershed Ecology and the Environment*. 7. 104–118. <https://doi.org/10.1016/j.wsee.2025.02.001>
- Hunsigi. G. (2001). *Sugarcane in agriculture and industry*. Kamataka Institute of Applied Agriculture Research.
- Jamil. M., Ahmed. R., & Sajjad. H. (2018). Land suitability assessment for sugarcane cultivation in Bijnor district. India using geographic information system and fuzzy analytical hierarchy process. *GeoJournal*. 83(3). 595–611. <https://doi.org/10.1007/s10708-017-9788-5>
- Jusfarida. & Syafirina. M. I. H. (2021). Analisis Zona Rawan Banjir Berbasis Pemetaan Geologi Pada Wilayah DAS Rejoso dan Sekitarnya di Kabupaten Pasuruan. *Prosiding Seminar Nasional Sains Dan Teknologi Terapan*. 515–521.
- Kementerian Pertanian. (2015). *Peraturan Menteri Pertanian Nomor 53/Permentan/Kb.110/10/2015 Tahun 2015 Tentang Pedoman Budidaya Tebu Giling Yang Baik (Good Agricultural Practices/Gap For Sugar Cane)*. [www.peraturan.go.id](http://www.peraturan.go.id)
- Kiswanto. & Wijayanto. B. (2014). *Petunjuk Teknis Budidaya Tebu*. Balai Pengkajian Teknologi Pertanian Lampung.
- Kjeldahl. J. (1883). A New Method for the Determination of Nitrogen in Organic Matter. *Zeitschrift Für Analytische Chemie*. 22(1). 366–382. <https://doi.org/10.1007/BF01338151>.

- Lukito. A. (2019). Loyalitas Petani Tebu Rakyat Berkaitan dengan Perilaku Petani. Peran Pemerintah dan Pabrik Gula di Jawa Timur (Studi Kasus di Kabupaten Pasuruan. Jawa Timur). *Paradigma Agribisnis*. 2(1). 1–11. <https://doi.org/10.33603/jpa.v2i1.2231>
- Marpaung. F. A., Hidayat. A., & Soedarto. T. (2025). Penguatan Kelembagaan Pertanian dalam Mendukung Swasembada Gula melalui Penerapan Ekosistem Tebu Rakyat. *Indonesian Journal of Management Science*. 4(1). 65–75. <https://doi.org/10.46821/ijms.v4i1.615>
- Moore. I. D., Grayson. R. B., & Ladson. A. R. (1991). Digital Terrain Modelling: A Review of Hydrological, Geomorphological, and Biological Applications. *Hydrological Processes*. 5. 3–30.
- Morais. J. E. F. de Silva, Ê. F. de F. e., Godoi Neto. A. H., Lima. B. L. de C., Lira. R. M. de Berto. S. D. da C., Jardim. A. M. da R. F., Simões Neto. D. E., Silva. T. G. F. da. & Rolim. M. M. (2022). Sugarcane (*Saccharum officinarum* L.) under saline stress: Growth, productivity, technological quality, and industrial yield. *Industrial Crops and Products*. 188. <https://doi.org/10.1016/J.INDCROP.2022.115642>.
- Mulyono. D. (2009). Evaluasi Kesesuaian Lahan dan Arahan Pemupukan N, P, dan K Dalam Budidaya Tebu untuk Pengembangan Daerah Kabupaten Tulungagung. *Jurnal Sains Dan Teknologi Indonesia*. 11(1). 47–53.
- Mulyono. D. (2011). Analisis Kesesuaian Lahan dan Evaluasi Jenis Tanah Dalam Budidaya Tanaman Tebu untuk Pengembangan Daerah Kabupaten Tegal. *Jurnal Sains Dan Teknologi Indonesia*. 13(2). 116–123. <https://garuda.kemdikbud.go.id/documents/detail/1537218>
- Olsen. S. R., Cole. C. V., Watanable. F. S., & Dean. L. A. (1954). Estimation of Available Phosphorus in Soil by Extraction with Sodium Bicarbonate. United States Departement of Agriculture (USDA). Washington. D.C.

- Permana, G. D., Soegianto, A., & Kuswanto. (2018). Respon Enam Varietas Unggul Tebu Terhadap Genangan. *Jurnal Produksi Tanaman*. 6(6). 1195–1203.
- Pramuhadi, G. (2010). Faktor Iklim Pada Budidaya Tebu Lahan Kering. *Jurnal Pangan*. 19(4). 331–344.
- Rahmawati Putri, P., & Priyadarshini, R. (2023). Karakteristik Sifat Fisik Tanah Wilayah Hulu Daerah Aliran Sungai (DAS) Rejoso Kabupaten Pasuruan. *J. Solum*. 1. 39–45. <https://doi.org/10.25077/jsolum.20.1.39-45.2023>
- Renard, K. G., Foster, G. R., Weesies, G. A., McCool, D. K., & Yoder, D. C. (1997). Predicting Soil Erosion by Water: A Guide to Conservation Planning with the Revised Universal Soil Loss Equation (RUSLE). In USDA Agriculture Handbook No. 703.
- Ritung, S., Nugroho, K., Mulyani, A., & Suryani, E. (2011). *Petunjuk Teknis Evaluasi Lahan Untuk Komoditas Pertanian (Edisi Revisi)*. Balai Besar Penelitian dan Pengembangan Sumberdaya Lahan Pertanian. Badan Penelitian dan Pengembangan Pertanian. [www.bbsdip.litbang.deptan.go.id](http://www.bbsdip.litbang.deptan.go.id)
- Romadhon, M. R., & Hermiyanto, B. (2021). Penentuan Indeks Kesuburan Tanah di Sub DAS Dinoyo, Kabupaten Jember. *Jurnal Tanah Dan Iklim*. 45(1). 27. <https://doi.org/10.21082/jti.v45n1.2021.27-37>
- Sari, M. F., Taryono, & Wulandari, R. A. (2019). Indeks Ketahanan Salinitas 10 Klon Tebu (*Saccharum officinarum*). *Jurnal Planta Simbiosa*. 1(2). 2019. <https://doi.org/https://doi.org/10.25181/jplantasimbiosa.v1i2.1487>.
- Sihombing, J. E., Marbun, P., & Marpaung, P. (2019). Pemetaan Status Kesuburan Tanah Pada Lahan Kopi Arabika. *Jurnal Agroekoteknologi*. 7(1). 239–245. <https://jurnal.usu.ac.id/agroekoteknologi>

- Sukarman, Ritung, S., Anda, M., & Suryani, E. (2017). *Pedoman Pengamatan Tanah di Lapangan*. Badan Penelitian dan Pengembangan Pertanian. IAARD Press.
- Supriyanti, Y. (2024). *Analisis Kinerja Perdagangan Gula*. Pusat Data dan Sistem Informasi Pertanian Sekretariat Jenderal Kementerian Pertanian.
- Syahidah, M. A., & Hermiyanto, B. (2019). Pengaruh Penambahan Pupuk Kandang Sapi Berkala Ilmiah Pertanian. *Berkala Ilmiah Pertanian*, 2(4), 132–140.
- Sys, C., Van Ranst, E., Debaveye, J., & Beernaert, F. (1993). *Land Evaluation. Crop Requirements Part III. Agricultural Publication No. 7*. General Administration, for Development Corp. 1050 Brussels-Belgium. .
- Wahyunto, Hikmatullah, Suryani, E., Tafakresnanto, C., Ritung, S., Mulyani, A., Sukarman, Nugroho, K., Sulaeman, Y., Apriana, Y., Suciandini, Pramudia, A., Suparto, Subandiono, R. E., Sutriadi, T., & Nursyamsi, D. (2016). *Petunjuk teknis pedoman penilaian kesesuaian lahan untuk komoditas pertanian strategis tingkat semi detail skala 1:50.000*. Balai Besar Litbang Sumberdaya Lahan Pertanian.
- Walkley, A., & Black, I. A. (1934). An Examination of the Degtjareff Method for Determining Soil Organic Matter, and a Proposed Modification of the Chromic Acid Titration Method. *Soil Science*, 37(1), 29–38. <https://doi.org/http://dx.doi.org/10.1097/00010694-193401000-00003>.
- Widjajanto, D., Monde, A., Rahman, A., Zainuddin, R., Hasanah, U., Prahastuti, S. W., Nurfadila, N., & Gailea, R. (2024). Hubungan Diantara Beberapa Sifat Fisika Tanah pada Penggunaan Lahan Berbeda. *Agroland: Jurnal Ilmu-Ilmu Pertanian*, 31(3), 206–216. <https://doi.org/10.22487/agrolandnasional.v31i3.2336>.
- Winazira, A., & Sufardi. (2021). Status dan Kendala Kesuburan Tanah Pada Lahan Tegalan dan Kebun Campuran di Kecamatan Blang Bintang Kabupaten Aceh Besar. *Jurnal Ilmiah Mahasiswa Pertanian*, 6(2), 79–87. <https://doi.org/https://doi.org/10.17969/jimfp.v6i2.16950>.